

More Freedom – Less Effort

RockStar® ModuPlug is Setting New Standards

Let's connect.

Heavy Duty Connectors



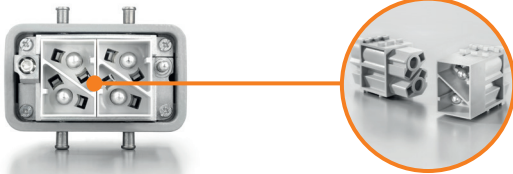
Weidmüller 

Outstanding performance in the smallest of spaces

More & Less: RockStar® ModuPlug

Optimal and future-proof connections are nowhere more valuable than in industry. Whether in machine construction, transportation or the energy sector, the uses of professional plug-in connector systems are endless.

More for less: RockStar® ModuPlug sets new standards. The modular connector system solves space problems by offering increased functionality with a reduced installation space, which in turn also helps keep the weight down. And all this with more convenient installation. Simply more of what you need and less of what you can do without.



More power – Less weight

Reduced weight with the same power thanks to the 100 A module in 1.5 width



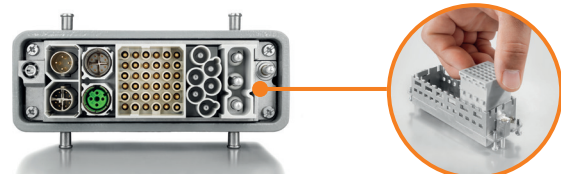
More signals – Less space

HD 36 module with optimal packing density for transmission of more signals



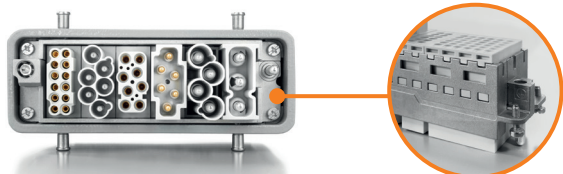
More options – Less costs

4 different module widths for more functionality in the smallest of installation spaces



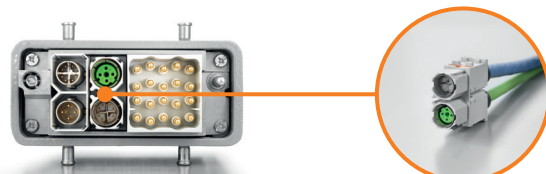
More convenience – Less risk

Fast and simple handling due to the innovative sliding frame and reliable coding



More flexibility – Less dependency

Wide variety and compatibility allow for increased flexibility in planning and installation



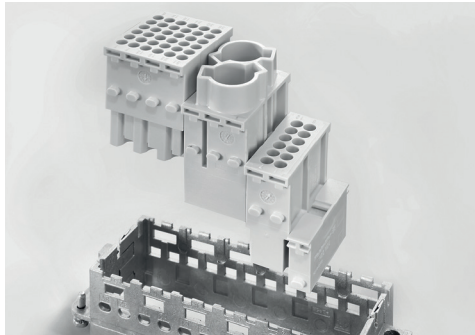
More data – Less limits

Data transmission with up to 2 Cat. 6_A connections each with 10 Gbit



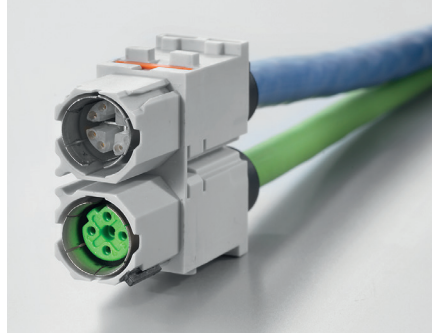
RockStar® ModuPlug has been specially designed with the future in mind. Using the individual modules, you combine all the necessary functions for power, signal and data transmission in a single interface. The modules reduce the amount of space required and cut costs as compared with fixed-pole inserts and other modular plug-in connector systems.

The frames and modules can be installed with extreme ease and integrated into HDC housings with the IP65 and IP68 protection classes. You can even use RockStar® ModuPlug in existing applications without the need to make system adjustments.



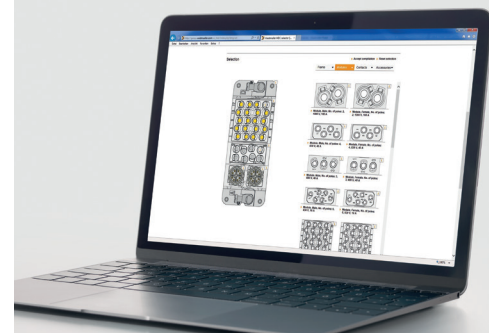
Pitch size halved

The module pitch size in the frame has been halved. This doubles the number of module spaces and increases the functionality in the same space.



Compact module

The compact bus module is designed for megabit and gigabit data connectors. This allows the integration of up to two Cat. 6_A connections, each with 10 GBit in one module.

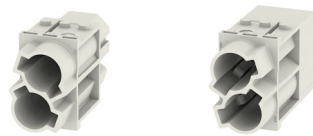


Simple configuration

Configure frames, modules, contacts and accessories quickly and easily in the RockStar® ModuPlug online configurator.

Modules

HDC MHP 100 2



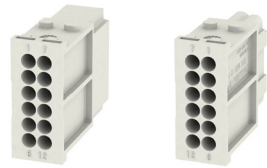
Rated current:	100 A
Rated voltage:	1,000 V
No. of poles:	2
Order No. Male:	1429060000
Order No. Female:	1429080000

HDC MHX 4P



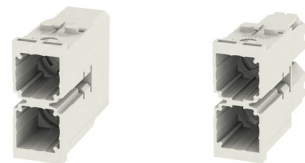
Rated current:	40 A
Rated voltage:	830 V
No. of poles:	4
Order No. Male:	1428950000
Order No. Female:	1428970000

HDC MHD 12



Rated current:	10 A
Rated voltage:	250 V
No. of poles:	12
Order No. Male:	1428840000
Order No. Female:	1428850000

HDC MBUS 2



Rated current:	-
Rated voltage:	-
No. of poles:	2
Order No. Male:	1428990000
Order No. Female:	1429020000

HDC MHX 3



Rated current:	40 A
Rated voltage:	690 V
No. of poles:	3
Order No. Male:	1429340000
Order No. Female:	1429350000

HDC MHE 6P



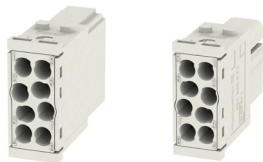
Rated current:	16 A
Rated voltage:	830 V
No. of poles:	6
Order No. Male:	1505650000
Order No. Female:	1505660000

HDC MHE 20



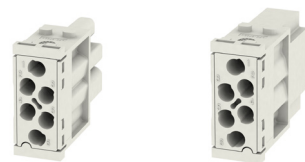
Rated current:	16 A
Rated voltage:	500 V
No. of poles:	20
Order No. Male:	1428910000
Order No. Female:	1428930000

HDC MHE 8



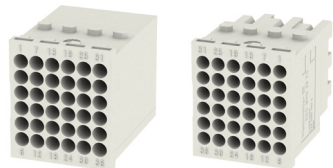
Rated current:	16 A
Rated voltage:	400 V
No. of poles:	8
Order No. Male:	1428880000
Order No. Female:	1428890000

HDC MHE 6



Rated current:	16 A
Rated voltage:	500 V
No. of poles:	6
Order No. Male:	1429360000
Order No. Female:	1429370000

HDC MHD 36



Rated current:	10 A
Rated voltage:	250 V
No. of poles:	36
Order No. Male:	1428860000
Order No. Female:	1428870000

Cat. 5e Data Inserts

HDC XX5E01 FMSM12D-0100



Module side version: Female
Opposite side version: Male, straight, M12D
Cable length: 1 m
Transmission rate: 100 Mbit/s
Order No.: 2451120100

HDC XX5E01 FMSRJ45-0100



Module side version: Female
Opposite side version: Male, straight, RJ45
Cable length: 1 m
Transmission rate: 100 Mbit/s
Order No.: 2451080100

HDC XX5E01 FOXXXXX-0100



Module side version: Female
Opposite side version: open
Cable length: 1 m
Transmission rate: 100 Mbit/s
Order No.: 2003920100

HDC XX5E01 MMSM12D-0100



Module side version: Male
Opposite side version: Male, straight, M12D
Cable length: 1 m
Transmission rate: 100 Mbit/s
Order No.: 2451110100

HDC XX5E01 MFSXXX-0100



Module side version: Male
Opposite side version: Female, straight
Cable length: 1 m
Transmission rate: 100 Mbit/s
Order No.: 2453550100

HDC XX5E01 MMSRJ45-0100



Module side version: Male
Opposite side version: Male, straight, RJ45
Cable length: 1 m
Transmission rate: 100 Mbit/s
Order No.: 2450490100

HDC XX5E01 MOXXXXX-0100



Module side version: Male
Opposite side version: open
Cable length: 1 m
Transmission rate: 100 Mbit/s
Order No.: 2003890100

HDC MBUS4 D5E



Type: Field attachable Cat 5e, D-coded
Current: 4 A
Voltage: 50 V
Order Number (Female): 2427930000
Order Number (Male): 2427920000

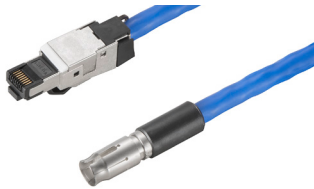
Cat. 6_A Data Inserts

HDC XX6A01 FMSM12X-0100



Module side version: Female
Opposite side version: Male, straight, M12X
Cable length: 1 m
Transmission rate: 10 GBit/s
Order No.: 2451140100

HDC XX6A01 FMSRJ45-0100



Module side version: Female
Opposite side version: Male, straight, RJ45
Cable length: 1 m
Transmission rate: 10 GBit/s
Order No.: 2451100100

HDC XX6A01 FOXXXXX-0100



Module side version: Female
Opposite side version: open
Cable length: 1 m
Transmission rate: 10 GBit/s
Order No.: 2003850100

HDC XX6A01 MMSM12X-0100



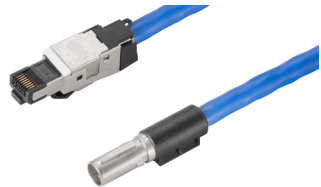
Module side version: Male
Opposite side version: Male, straight, M12X
Cable length: 1 m
Transmission rate: 10 GBit/s
Order No.: 2451130100

HDC XX6A01 MFSXXX-0100



Module side version: Male
Opposite side version: Female, straight
Cable length: 1 m
Transmission rate: 10 GBit/s
Order No.: 2453540100

HDC XX6A01 MMSRJ45-0100



Module side version: Male
Opposite side version: Male, straight, RJ45
Cable length: 1 m
Transmission rate: 10 GBit/s
Order No.: 2451090100

HDC XX6A01 MOXXXXX-0100



Module side version: Male
Opposite side version: open
Cable length: 1 m
Transmission rate: 10 GBit/s
Order No.: 2003820100

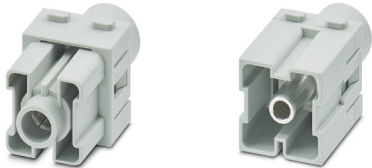
HDC MBUS8 X6A



Type: Field attachable Cat 6_A, X-coded
Current: 0.5 A
Voltage: 50 V
Order Number (Female): 2427910000
Order Number (Male): 2427900000

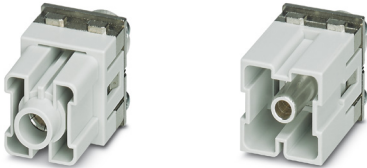
Power

HDC MHP 200 AS



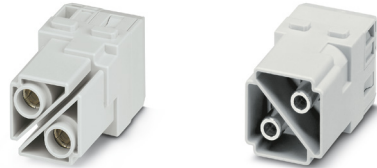
Current: 200 A
Voltage: 1000 V
Connection Type: Axial screw connection
Order Number (Female): 2748250000
Order Number (Male): 2748240000

HDC MHP 200 PE



Current: 200 A
Voltage: 1000 V
Connection Type: Axial screw connection
Order Number (Female): 2748270000
Order Number (Male): 2748260000

HDC MHP 100 AS



Current: 100 A
Voltage: 1000 V
Connection Type: Axial screw connection
Order Number (Female): 2748290000
Order Number (Male): 2748280000

Power

HDC MHP 70 AS



Current: 70 A
Voltage: 1000 V
Connection Type: Axial screw connection
Order Number (Female): 2748310000
Order Number (Male): 2748300000

HDC MHX 2 AS



Current: 40 A
Voltage: 1000 V
Connection Type: Axial screw connection
Order Number (Female): 2748330000
Order Number (Male): 2748320000

HDC MHX 2



Current: 40 A
Voltage: 830 V
Connection Type: Crimp connection
Order Number (Female): 2748350000
Order Number (Male): 2748340000

HDC MHP 200



Current: 200 A
Voltage: 1000 V
Connection Type: Crimp connection
Order Number (Female): 2549260000
Order Number (Male): 2548900000

HDC MHP 100



Current: 100 A
Voltage: 1000 V
Connection Type: Crimp connection
Order Number (Female): 1429080000
Order Number (Male): 1429060000

HDC MHP 70



Current: 70 A
Voltage: 1000 V
Connection Type: Crimp connection
Order Number (Female): 2668180000
Order Number (Male): 2668190000

HDC MHX 4P



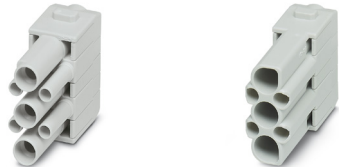
Current: 40 A
Voltage: 830 V
Connection Type: Crimp connection
Order Number (Female): 1428970000
Order Number (Male): 1428950000

HDC MHX 3



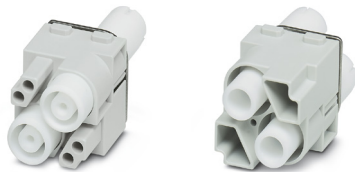
Current: 40 A
Voltage: 690 V
Connection Type: Crimp connection
Order Number (Female): 1429350000
Order Number (Male): 1429340000

HDC MHX 3/4



Current: 10 A
Voltage: 500 V
Connection Type: Crimp connection
Order Number (Female): 2748370000
Order Number (Male): 2748360000

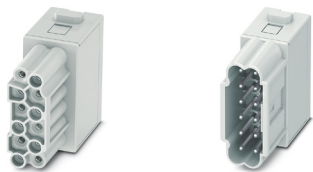
HDC MHE 2 HV



Current: 16 A
Voltage: 2900 V
Connection Type: Crimp connection
Order Number (Female): 2748390000
Order Number (Male): 2748380000

Signal

HDC MHD 12 MP



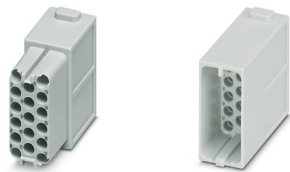
Current: 10 A
Voltage: 250 V
Connection Type: PUSH IN connection
Order Number (Female): 2748470000
Order Number (Male): 2748460000

HDC MHD 12 FC



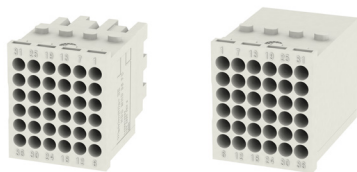
Current: 10 A
Voltage: 250 V
Connection Type: Crimp connection
Order Number (Female): 1428850000
Order Number (Male): 1428840000

HDC MHD 17



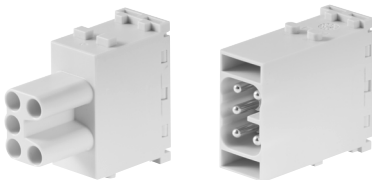
Current: 10 A
Voltage: 160 V
Connection Type: Crimp connection
Order Number (Female): 2748490000
Order Number (Male): 2748480000

HDC MHD 36



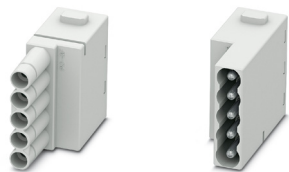
Current: 10 A
Voltage: 250 V
Connection Type: Crimp connection
Order Number (Female): 1428870000
Order Number (Male): 1428860000

HDC MHE 5



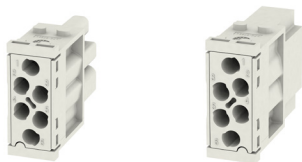
Current: 16 A
Voltage: 400 V
Connection Type: PUSH IN connection
Order Number (Female): 2636190000
Order Number (Male): 2636180000

HDC MHE 5L



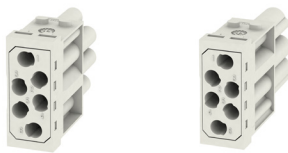
Current: 16 A
Voltage: 230 V
Connection Type: PUSH IN connection
Order Number (Female): 2748410000
Order Number (Male): 2748400000

HDC MHE 6



Current: 16 A
Voltage: 500 V
Connection Type: Crimp connection
Order Number (Female): 1429370000
Order Number (Male): 1429360000

HDC MHE 6P



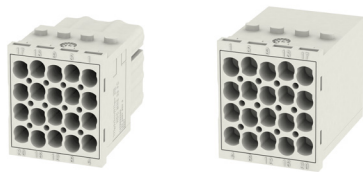
Current: 16 A
Voltage: 830 V
Connection Type: Crimp connection
Order Number (Female): 1505660000
Order Number (Male): 1505650000

HDC MHE 8



Current: 16 A
Voltage: 400 V
Connection Type: Crimp connection
Order Number (Female): 1428890000
Order Number (Male): 1428880000

HDC MHE 20



Current: 16 A
Voltage: 500 V
Connection Type: Crimp connection
Order Number (Female): 1428930000
Order Number (Male): 1428910000

Data

HDC MGBIT 8



Current: 5 A
Voltage: 50 V
Connection Type: Crimp connection
Order Number (Female): 2748530000
Order Number (Male): 2748520000

HDC C HS 0.2-0.5 AU



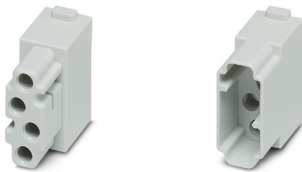
Current: —
Voltage: —
Connection Type: Crimp contact
Order Number (Female): 2748720000
Order Number (Male): 2748700000

HDC C HS 0.08-0.12 AU



Current: —
Voltage: —
Connection Type: Crimp contact
Order Number (Female): 2748730000
Order Number (Male): 2748710000

HDC MCOAX 4



Current: 1.5 A
Voltage: 50 V
Connection Type: Crimp connection
Order Number (Female): 2748550000
Order Number (Male): 2748540000

HDC C COAX 50



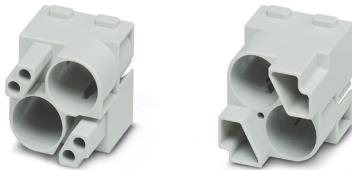
Current: 1.5 A
Voltage: 50 V
Connection Type: Crimp contact
Order Number (Female): 2748660000
Order Number (Male): 2748670000

HDC C COAX 75



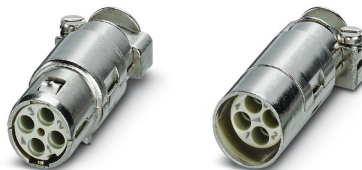
Current: 2 A
Voltage: 250 V
Connection Type: Crimp contact
Order Number (Female): 2748680000
Order Number (Male): 2748690000

HDC MEMC 2



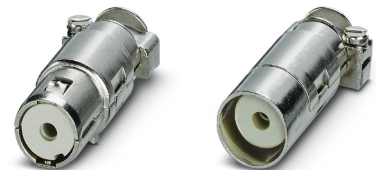
Current: 10 A
Voltage: 50 V
Connection Type: Crimp connection
Order Number (Female): 2748570000
Order Number (Male): 2748560000

HDC MBUS HD 4



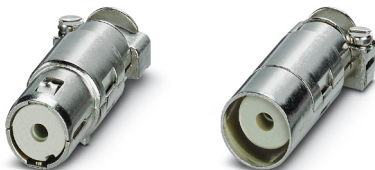
Current: 10 A
Voltage: 50 V
Connection Type: Crimp connection
Order Number (Female): 2748620000
Order Number (Male): 2748590000

HDC MBUS HE 1



Current: 16 A
Voltage: 50 V
Connection Type: Crimp connection
Order Number (Female): 2748600000
Order Number (Male): 2748610000

HDC MBUS HD 1



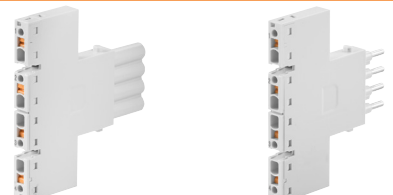
Current: 10 A
Voltage: 50 V
Connection Type: Crimp connection
Order Number (Female): 2748620000
Order Number (Male): 2748630000

HDC MBUS HS 8



Current: 5 A
Voltage: 50 V
Connection Type: Crimp connection
Order Number (Female): 2748640000
Order Number (Male): 2748650000

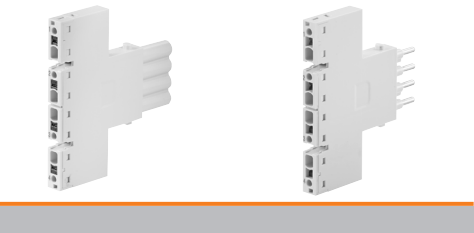
HDC MHE 4X



Type: Terminal Block Module
Current: 16 A
Voltage: 250 V
Connection Type: PUSH IN connection
Order Number (Female): 2636060000
Order Number (Male): 2636070000

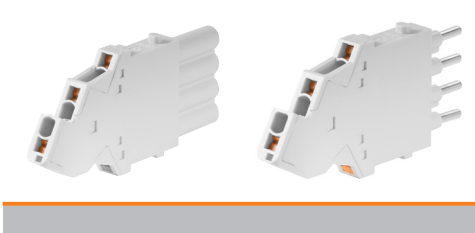
Data

HDC MHE 4X2



Type: Terminal Block Module with potential distribution
Current: 16 A
Voltage: 250 V
Connection Type: PUSH IN connection
Order Number (Female): 2636080000
Order Number (Male): 2636090000

HDC MHE 4



Type: Terminal Block Module
Current: 16 A
Voltage: 250 V
Connection Type: PUSH IN connection
Order Number (Female): 2635990000
Order Number (Male): 2635980000

HDC MMARK 4



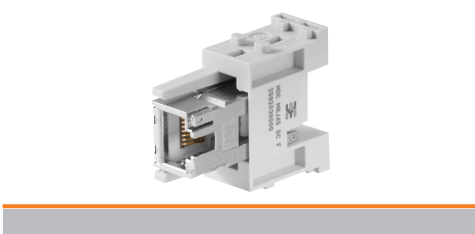
Type: Markers (64 pcs per card)
Order Number: 2710590000

HDC MXSCC* 4X



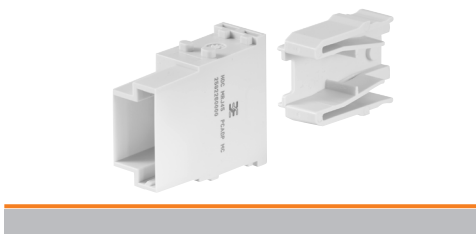
Type: Cross-connector bridge
Current: 2 to 12 pole
Order Number (2 pole): 2709710000
Order Number (12 pole): 2709820000

HDC MRJ45 GC



Type: RJ45 Gender Changer - mating side to all others
Current: 1 A
Voltage: 50 V
Connection Type: Pin
Order Number: 2592030000

HDC MRJ45 PCADP MC



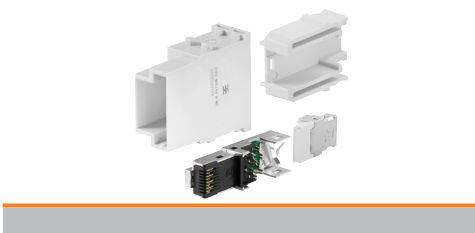
Type: Adapter - RJ45 for patch cable
Order Number: 2592260000

HDC MRJ45 ABP MI



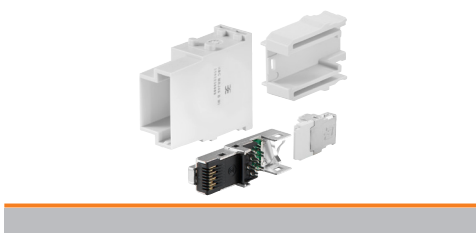
Type: TIA-568A, EIA/TIA T568 B, PROFINET
Order Number: 2592210000

HDC MRJ45 A MI



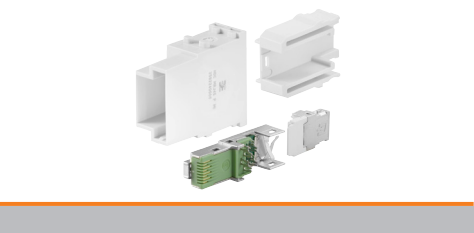
Type: TIA-568A
Order Number: 2592220000

HDC MRJ45 B MI



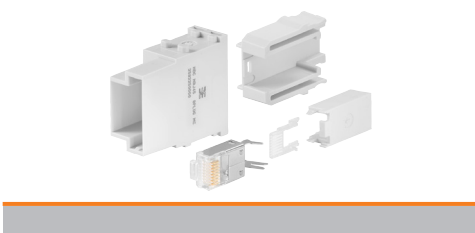
Type: EIA/TIA T568 B
Order Number: 2592230000

HDC MRJ45 P MI



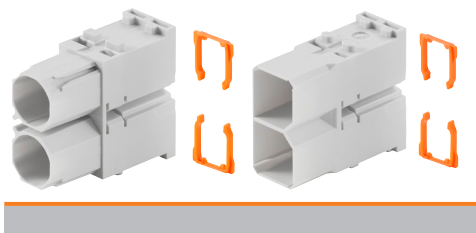
Type: Profinet
Order Number: 2592240000

HDC MRJ45 8 PLUG MC



Type: Module, Plug insert, RJ45 crimp
Current: 1 A
Voltage: 50 V
Connection Type: Crimp
Order Number: 2592250000

HDC MBUS



Type: Data module
Note: Requires WM Cable Only
Order Number (Female): 1429020000
Order Number (Male): 1428990000

Pneumatic

HDC MPN 2



Type: Two Pole Pneumatic module
Order Number: 2637320000

HDC MPN 6.0



Type: Pneumatic contact
Order Number (Female): 2637390000
Order Number (Male): 2637350000
Order Number (SOF): 2637400000

HDC MPN 3



Type: Three Pole Pneumatic module
Order Number: 2637340000

HDC MPN 1.6



Type: Pneumatic contact
Order Number (Female): 2637480000
Order Number (Male): 2637470000
Order Number (SOF): 2637490000

HDC MPN 3.0



Type: Pneumatic contact
Order Number (Female): 2637450000
Order Number (Male): 2637440000
Order Number (SOF): 2637460000

HDC MPN 4.0

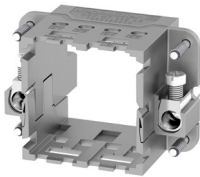


Type: Pneumatic contact
Order Number (Female): 2637420000
Order Number (Male): 2637410000
Order Number (SOF): 2637430000



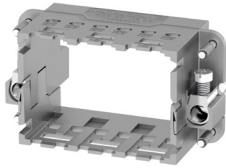
Frames

HDC MF 6B



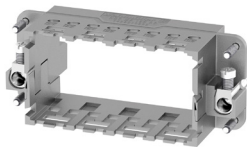
Housing Size: 6B = Size 3
Order Number (AB): 1428920000
Order Number (BA): 1428940000

HDC MF 10B



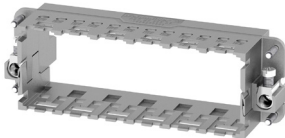
Housing Size: 10B = Size 4
Order Number (AC): 1428960000
Order Number (CA): 1428980000

HDC MF 16B



Housing Size: 16B = Size 6
Order Number (AD): 1429010000
Order Number (DA): 1429030000

HDC MF 24B



Housing Size: 24B = Size 8
Order Number (AF): 1429050000
Order Number (FA): 1429070000

Housing and Accessories

Housing Top Entry



Size: 3	Cable entry size: M25	Order Number: 2716700000
Size: 4	Cable entry size: M32	Order Number: 2716720000
Size: 6	Cable entry size: M40	Order Number: 2716730000
Size: 8	Cable entry size: M40	Order Number: 2716740000

Housing Side Entry



Size: 3	Cable entry size: M25	Order Number: 2716750000
Size: 4	Cable entry size: M32	Order Number: 2716760000
Size: 6	Cable entry size: M40	Order Number: 2716770000
Size: 8	Cable entry size: M40	Order Number: 2716780000

HDC AF WM Cover



Type: Cover for lower part of housing

Size: 3	Order Number: 2716810000
Size: 4	Order Number: 2716820000
Size: 6	Order Number: 2716830000
Size: 8	Order Number: 2716840000

HDC AF WM



Type: Adapters needed for mounting

Order Number (Pk 20 no screws):	2716790000
Order Number (2 pcs with screws):	2716800000

HDC MDU



Type: Dummy Module 1/2 space size

Order Number:	1429040000
---------------	------------

Moduplug Portfolio



Type	Description	Length	Qty.	Order number
Cat. 6A, LSZH, gray	HDC RJ4501 MMSCAT6-0020	0.2 m	1 pc.	2661950020
	HDC RJ4501 MMSCAT6-0030	0.3 m	1 pc.	2661950030
	HDC RJ4501 MMSCAT6-0040	0.4 m	1 pc.	2661950040
	HDC RJ4501 MMSCAT6-0050	0.5 m	1 pc.	2661950050
	HDC RJ4501 MMSCAT6-0060	0.6 m	1 pc.	2661950060
	HDC RJ4501 MMSCAT6-0070	0.7 m	1 pc.	2661950070
	HDC RJ4501 MMSCAT6-0080	0.8 m	1 pc.	2661950080
	HDC RJ4501 MMSCAT6-0090	0.9 m	1 pc.	2661950090
	HDC RJ4501 MMSCAT6-0100	1.0 m	1 pc.	2661950100
	HDC RJ4501 MMSCAT6-0150	1.5 m	1 pc.	2661950150
	HDC RJ4501 MMSCAT6-0200	2.0 m	1 pc.	2661950200
	HDC RJ4501 MMSCAT6-0250	2.5 m	1 pc.	2661950250
	HDC RJ4501 MMSCAT6-0300	3.0 m	1 pc.	2661950300
	HDC RJ4501 MMSCAT6-0400	4.0 m	1 pc.	2661950400
	HDC RJ4501 MMSCAT6-0500	5.0 m	1 pc.	2661950500
	HDC RJ4501 MMSCAT6-0600	6.0 m	1 pc.	2661950600
	HDC RJ4501 MMSCAT6-0700	7.0 m	1 pc.	2661950700
	HDC RJ4501 MMSCAT6-0750	7.5 m	1 pc.	2661950750
	HDC RJ4501 MMSCAT6-0800	8.5 m	1 pc.	2661950800
	HDC RJ4501 MMSCAT6-0900	9.0 m	1 pc.	2661950900
	HDC RJ4501 MMSCAT6-1000	10.0 m	1 pc.	2661951000
	HDC RJ4501 MMSCAT6-1500	15.0 m	1 pc.	2661951500
	HDC RJ4501 MMSCAT6-2000	20.0 m	1 pc.	2661952000

Weidmüller – Your partner in Industrial Connectivity

As experienced experts we support our customers and partners around the world with products, solutions and services in the industrial environment of power, signal and data. We are at home in their industries and markets and know the technological challenges of tomorrow. We are therefore continuously developing innovative, sustainable and useful solutions for their individual needs. Together we set standards in Industrial Connectivity.

Weidmuller, Ltd
10 Spy Court
Markham, Ontario L3R 5H6
Telephone: (800) 268-4080
Facsimile: (877) 300-5635
Email: orders_can@weidmueller.com
Website: www.weidmuller.ca

Weidmuller, SA de CV
Bld. Hermanos Serdán 698,
Col. San Rafael Oriente
Puebla, Puebla, Mexico C.P. 72029
Telephone: 01 222 2686267
Facsimile: 01 222 2686219
Email: clientes@weidmueller.com
Website: www.weidmuller.com.mx

Weidmuller, Inc
821 Southlake Blvd.
Richmond, Virginia 23236
Telephone: (800) 849-9343
Facsimile: (804) 379-2593
Email: info@weidmuller.com
Website: www.weidmuller.com